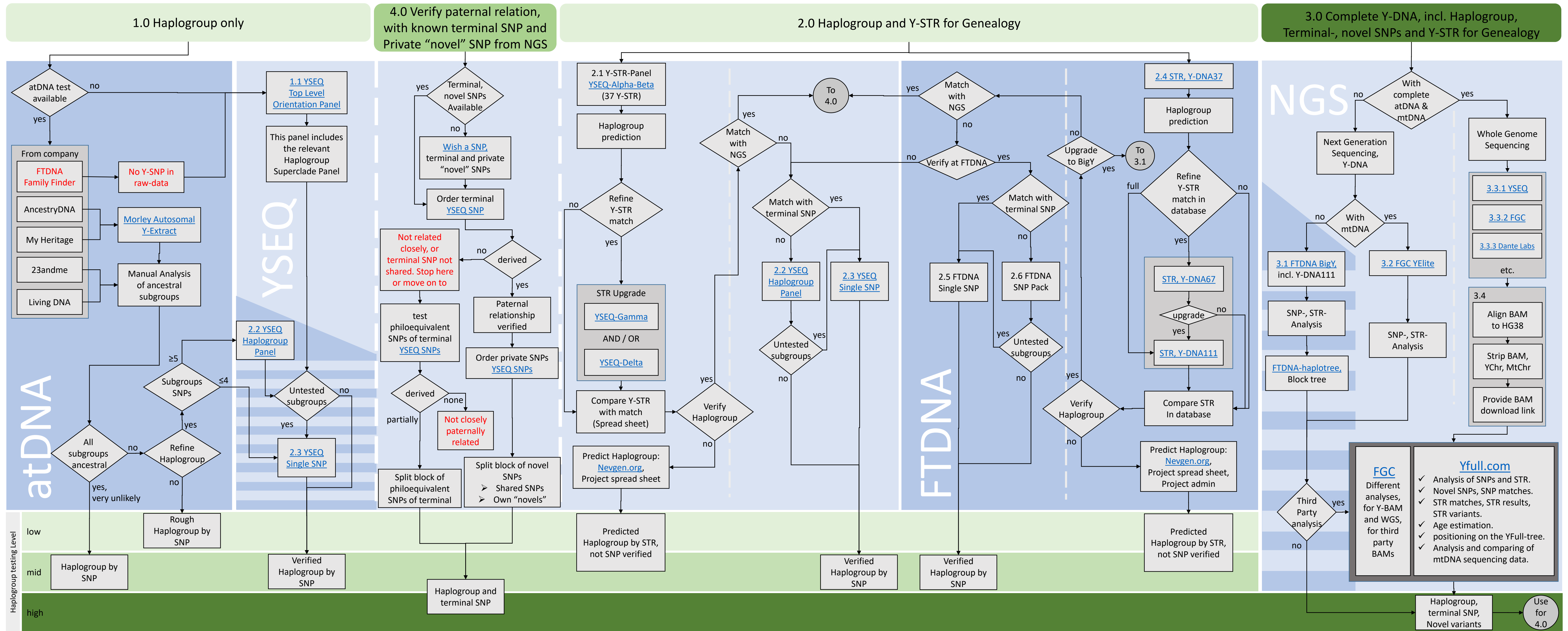


Y-DNA, Haplogroup and Genealogy



Product/strategy	Y-DNA from atDNA test	YSEQ Top Level Panel / Refine Haplogroup from atDNA	YSEQ SNP verification / Wish a SNP	YSEQ STR Panels	YSEQ SNP	FTDNA SNP	FTDNA Y-STR	FTDNA BigY	FGC YElite	Whole Genome Sequencing
price	<ul style="list-style-type: none"> Part of atDNA-test (autosomal DNA). 	<ul style="list-style-type: none"> Top Level Panel = \$159 Haplogroup Panel = \$88 - \$99 Single SNP = \$18 R1b-M434 Orientation panel = \$77 Include R1b subpanels = \$59 	<ul style="list-style-type: none"> Wish a SNP = \$1 Wish a panel = \$2 Single SNP = \$18 	<ul style="list-style-type: none"> YSEQ-Alpha-Beta = \$85 YSEQ-Gamma = \$95 YSEQ-Delta = \$95 YSEQ-Alpha = \$58 YSEQ-Beta = \$58 	<ul style="list-style-type: none"> Haplogroup Panel = \$88 - \$99 Single SNP = \$18 R1b-M434 Orientation panel = \$77 Include R1b subpanels = \$59 	<ul style="list-style-type: none"> SNP Packs = \$99 - \$119 Single SNP = \$39 	<ul style="list-style-type: none"> Y-DNA37 = \$169, Upgrade Y37 > Y67 = \$109 Y-DNA67 = \$268, Upgrade Y67 > Y111 = \$129 Y-DNA111 = \$359, Upgrade Y37 > Y111 = \$228 Sales available regularly 	<ul style="list-style-type: none"> BigY-700 = \$649 Upgrade from; Y37 > BigY = \$569 Y67 > BigY = \$499 Y111 > BigY = \$449 	<ul style="list-style-type: none"> FGC YElite 2.1 = \$425 FGC Y-BAM analysis, third party BAM = \$50 	<ul style="list-style-type: none"> YSEQ = \$740 - \$2170 (50x) FGC = \$645 - \$1150 (30x) DanteLabs = \$599 (30x) FGC, WGS basic analysis, third party BAM = \$75
hints	<ul style="list-style-type: none"> Check raw data for ancestral subgroups, with Morley Predictor and/or text editor in comparison with Y-DNA-trees From YFull, FTDNA and ISOGG. It might be, that some or all of your subclades have been tested, already. Take care of misinterpretation of results, before ordering SNPs and panels. Ask for help, if not sure. 	<ul style="list-style-type: none"> Version with STR (2.1>2.2>2.3) costs only a few \$ more. (1.1) 	<ul style="list-style-type: none"> Easiest and cheapest solution to verify paternal relationship. (if "young" terminal SNP known, due to NGS-tests and low amount of philoequivalent SNPs in block of terminal SNP and "novels" (private SNPs). Think about the strategy first! Yours might differ from above suggestion. Verify SNP if uncertain or NoCall at NGS. Single STR tests available, also. 	<ul style="list-style-type: none"> Start with Alpha-Beta If you don't match with another person at Alpha-Beta, upgrading to more Y-STR, might not be beneficial, depending on your use case. STR-values may be uploaded to existing YFull kit. 	<ul style="list-style-type: none"> In case you have a close Y-STR-match, who did test SNP, you can test his terminal SNP, (or even private "novel" SNPs, if he did NGS (4.0)) but going for a panel. 	<ul style="list-style-type: none"> In case you have a close Y-STR-match, who did test SNP, you can test his terminal SNP, but going for a panel. Compare FTDNA SNP Pack with YSEQ SNP Panel first. Depending on your subclade there are big differences in tested SNPs. 	<ul style="list-style-type: none"> Don't care of the given prediction and join the project for your haplogroup for better prediction of the project admins. If you don't have matches at Y37, upgrading to more Y-STR, might not be beneficial, depending on your use case. Y-STR results can be uploaded to existing YFull kit. 	<ul style="list-style-type: none"> Analysis at Yfull.com highly recommended. Dealing with this analysis helps understanding the NGS-results. Y-STR extraction depends on read length 100bp>150bp (better) 		<ul style="list-style-type: none"> WGS from FGC and YSEQ incl. Y-DNA-relevant services (3.4).
pros	<ul style="list-style-type: none"> Free of charge if atDNA-test taken. Can show, that two men are "not" related paternally. Can be used for "fishing" of Y-DNA-testers. (e.g. you got an atDNA match with your surname and same rough haplogroup (especially if rare). This is a candidate for further testing like 4.0) 	<ul style="list-style-type: none"> Products: Y-DNA (Y-STR-Panels, Single-STR, SNP-Packs, Single-SNPs, custom panels), mtDNA (HVR1, HVR2, full sequence), Whole Genome Sequencing (see 3.3.1). Fast turnaround time for Europe, because of lab in Berlin, Germany. Buy an "empty" DNA Sample Kit and order the product of choice, as soon as the sample reaches the lab. No previous test needed. (1.1) Great refinement of Haplogroup for people with atDNA. (2.2>2.3) Can show, that two men are "not" related paternally. 	<ul style="list-style-type: none"> Wish and order nearly every SNP, apart from certain regions. (e.g. CEN, DY219) Create custom panels. Split blocks of philoequivalent SNPs (e.g. terminal SNP block) and novels (if not too many) without further NGS. Will give you an idea how close you are related 	<ul style="list-style-type: none"> Great start, along with SNP verification. Great price if no database for Y-STR-matching needed. Can show that two men are related paternally. (Better confidence with more markers, to avoid coincidences) 	<ul style="list-style-type: none"> Nearly every SNP orderable, because of "Wish a SNP". No previous test at company needed, if Haplogroup known. 	<ul style="list-style-type: none"> No need to send in new sample. 	<ul style="list-style-type: none"> Database for Y-STR-matching. Can show that two men are related paternally. (Better confidence with more markers, to avoid coincidences) 	<ul style="list-style-type: none"> Own Y-DNA Haplotree with many users. Discover new SNPs and expand Y-DNA Haplotree (e.g. YFull-tree, ISOGG-Y-tree). Novel variants (private variants) for further genealogically relevant investigation. Extract hundreds of Y-STR from NGS. Best and most accurate way to show, that and how two men are related paternally. Raw data for upload to Yfull.com 	<ul style="list-style-type: none"> With complete mtDNA. 	<ul style="list-style-type: none"> With complete atDNA. With complete mtDNA. Best coverage.
cons	<ul style="list-style-type: none"> May give wrong results in rare cases. Can "not" show that two men are related paternally. 	<ul style="list-style-type: none"> No Y-STR included in this variant. Can "not" show that two men are related paternally. No upload to YFull database. 	<ul style="list-style-type: none"> Only practicable if low amount of philoequivalent SNPs in blocks of terminal SNPs and private "novel" SNPs. 	<ul style="list-style-type: none"> No Y-STR user database 		<ul style="list-style-type: none"> Single SNPs to expensive. No upload to YFull database. Can't be ordered if there is no previous Y-STR-test at FTDNA done. 	<ul style="list-style-type: none"> Very minor Haplogroup Prediction. Expensive 	<ul style="list-style-type: none"> Not separately available (without Y111). Only NGS without mtDNA. Expensive 		<ul style="list-style-type: none"> WGS from DanteLabs misses Y-DNA-relevant services (3.4). High costs